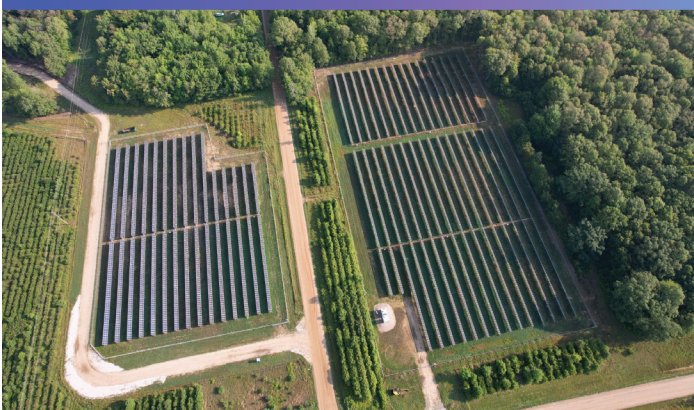


# Red Branch Solar



AES is developing Red Branch Solar, a proposed 200-megawatt solar energy facility located on private land in Burke County, GA, to provide clean, reliable power for the electric grid. The project area is located along Jack Delaigle and Claxton Lively Roads.

AES is committed to responsible clean energy development that creates long-term value and positive impact for both the environment and local communities. The project will support Georgia's growing demand for new low-cost electricity resources.



## Project overview & benefits



200 MW solar



Will generate enough energy to meet the equivalent needs of over 34,000 Georgia homes annually.



Hundreds of jobs are expected to be created during peak construction, in addition to several full-time positions throughout the life of the project.



An over \$300 million investment in the community, expected to generate approximately \$28 million dollars in property tax revenue to Burke County & the local community throughout the lifespan of the project.



Proposed to be situated predominantly within existing and former timber sites, minimizing the loss of county farmland, while preserving the land from more intense developments that can increase traffic and strain local services.



The project's design includes minimum setbacks of 200 to 300 feet that include significant vegetation to provide effective visual screening.

## Estimated project timeline





## Protecting the local environment

AES is committed to responsible and sustainable clean energy development that respects local land and the environment, without burdening existing infrastructure. We conduct a series of studies that ensure our projects are thoughtfully and responsibly designed while meeting all applicable laws and regulations.

In addition, we conduct a series of environmental due diligence studies that ensure the project's design avoids or minimizes environmental impacts to the greatest extent possible. Studies are reviewed by state and federal regulatory agencies that ensure compliance prior to issuance of environmental permits.

The project is designed to include buffers from sensitive natural areas that will remain undisturbed. The project area will be planted with a native seed mix, combined with other low-impact land use practices that preserve the land for future uses at the end of the project's lifespan. State law requires removal of all project equipment and posting of financial securities that remain in place until fully decommissioned.



## About AES

The AES Corporation (NYSE: AES) is a Fortune 500 global energy company accelerating the future of energy. Together with our many stakeholders, we're improving lives by delivering the greener, smarter energy solutions the world needs.

For more information, visit [www.aes.com](http://www.aes.com)

Email: [GAStakeholderRelations@aes.com](mailto:GAStakeholderRelations@aes.com)

Phone: 470-201-5441



## Partnering with communities for the future of energy

At AES, we understand that our success as a company is only as strong as our partnerships with the communities where we operate. That's why we partner with communities, customers, state and local agencies, higher education, elected officials, businesses and other key stakeholders to understand how we can best work together to support sustainable social and economic development through clean energy development that improves lives and builds stronger communities.



AES is a member of the Burke County Chamber of Commerce and believes partnering with local communities and participating locally is an essential part of solar development. Commitment to being a good partner and neighbor in Burke County is a project priority.

The project will support the local economy as local businesses will have the opportunity to provide materials and equipment for the project's construction. Service industries like restaurants and local stores will see increased business from workers during construction.

